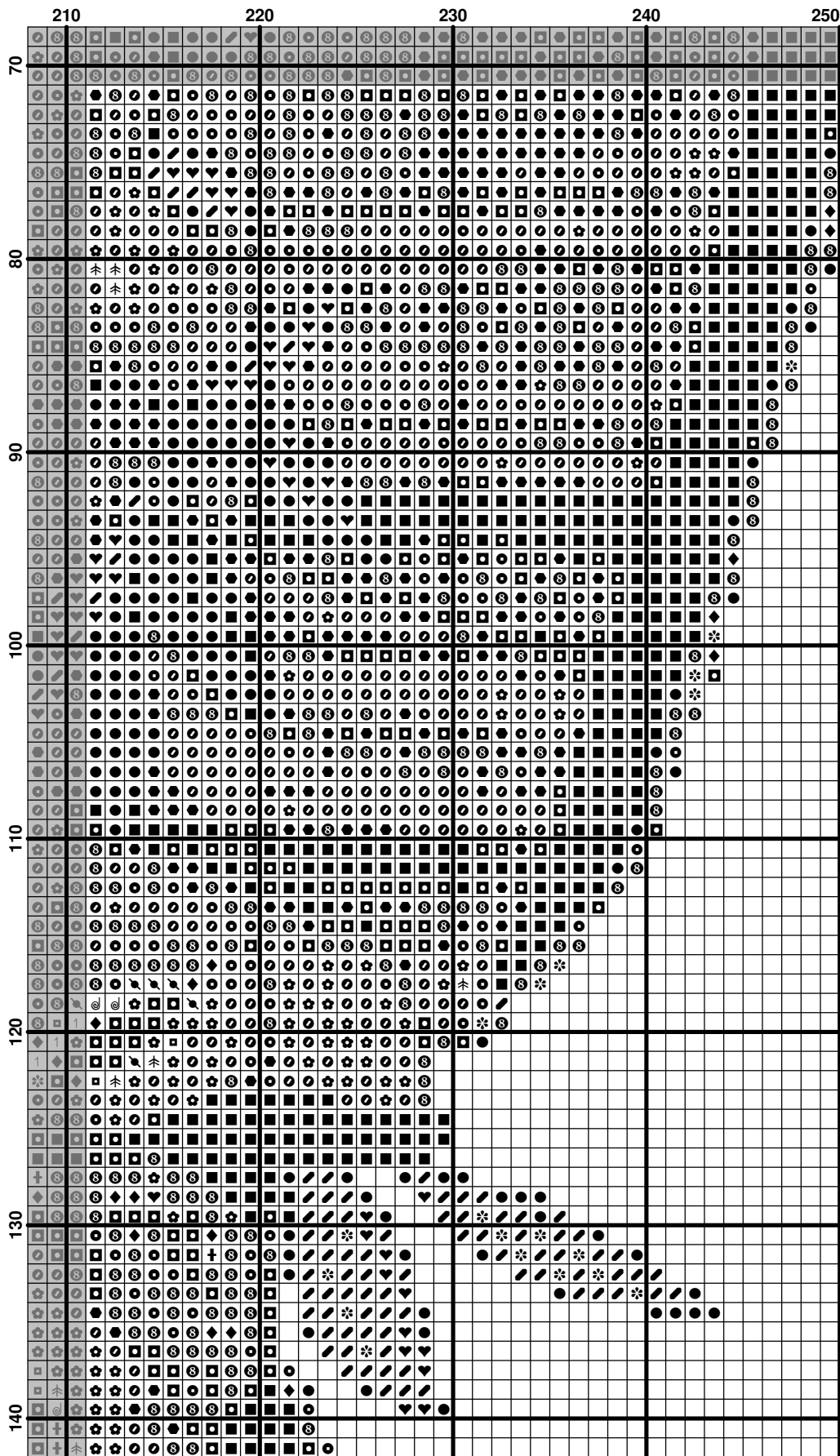
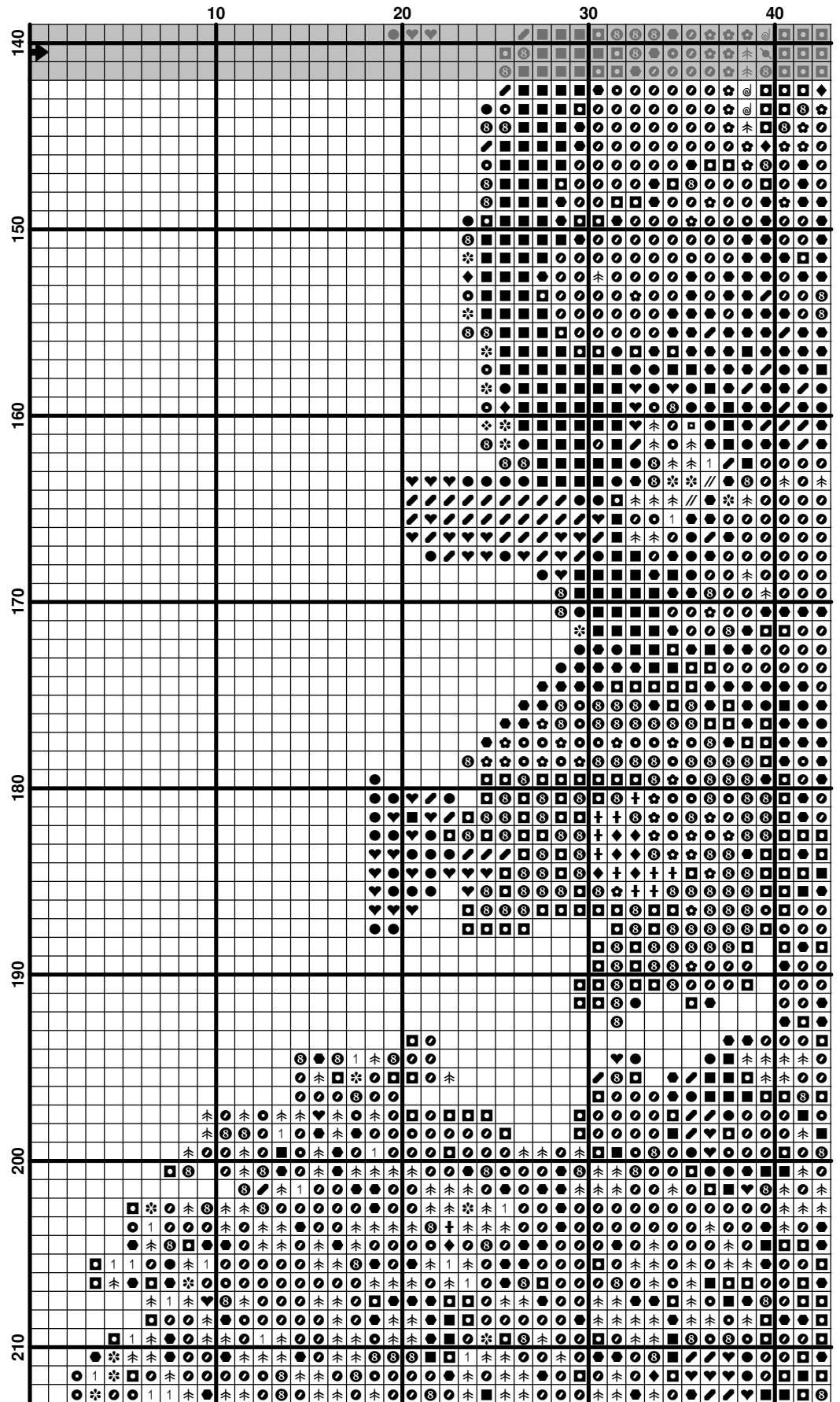




	100	110	120	130	140	150
70	♥♥♥♥♥♥♥♥♥♥	♥♥♥♥♥♥♥♥♥♥	♥♥♥♥♥♥♥♥♥♥	♥♥♥♥♥♥♥♥♥♥	♥♥♥♥♥♥♥♥♥♥	♥♥♥♥♥♥♥♥♥♥
80	♥♥♥♥♥♥♥♥♥♥	♥♥♥♥♥♥♥♥♥♥	♥♥♥♥♥♥♥♥♥♥	♥♥♥♥♥♥♥♥♥♥	♥♥♥♥♥♥♥♥♥♥	♥♥♥♥♥♥♥♥♥♥
90	♥♥♥♥♥♥♥♥♥♥	♥♥♥♥♥♥♥♥♥♥	♥♥♥♥♥♥♥♥♥♥	♥♥♥♥♥♥♥♥♥♥	♥♥♥♥♥♥♥♥♥♥	♥♥♥♥♥♥♥♥♥♥
100	♥♥♥♥♥♥♥♥♥♥	♥♥♥♥♥♥♥♥♥♥	♥♥♥♥♥♥♥♥♥♥	♥♥♥♥♥♥♥♥♥♥	♥♥♥♥♥♥♥♥♥♥	♥♥♥♥♥♥♥♥♥♥
110	♥♥♥♥♥♥♥♥♥♥	♥♥♥♥♥♥♥♥♥♥	♥♥♥♥♥♥♥♥♥♥	♥♥♥♥♥♥♥♥♥♥	♥♥♥♥♥♥♥♥♥♥	♥♥♥♥♥♥♥♥♥♥
120	♥♥♥♥♥♥♥♥♥♥	♥♥♥♥♥♥♥♥♥♥	♥♥♥♥♥♥♥♥♥♥	♥♥♥♥♥♥♥♥♥♥	♥♥♥♥♥♥♥♥♥♥	♥♥♥♥♥♥♥♥♥♥
130	♥♥♥♥♥♥♥♥♥♥	♥♥♥♥♥♥♥♥♥♥	♥♥♥♥♥♥♥♥♥♥	♥♥♥♥♥♥♥♥♥♥	♥♥♥♥♥♥♥♥♥♥	♥♥♥♥♥♥♥♥♥♥
140	♥♥♥♥♥♥♥♥♥♥	♥♥♥♥♥♥♥♥♥♥	♥♥♥♥♥♥♥♥♥♥	♥♥♥♥♥♥♥♥♥♥	♥♥♥♥♥♥♥♥♥♥	♥♥♥♥♥♥♥♥♥♥



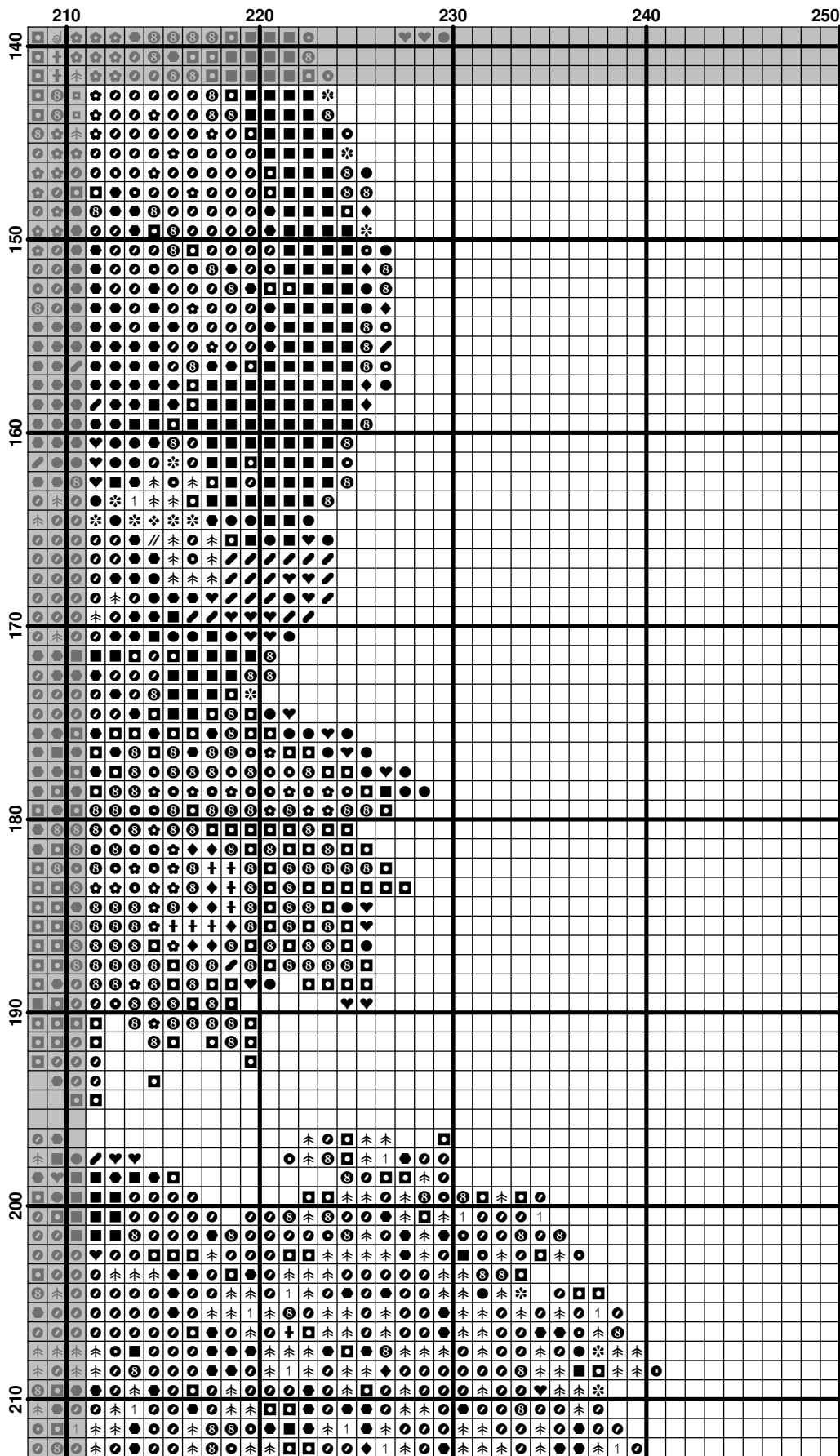


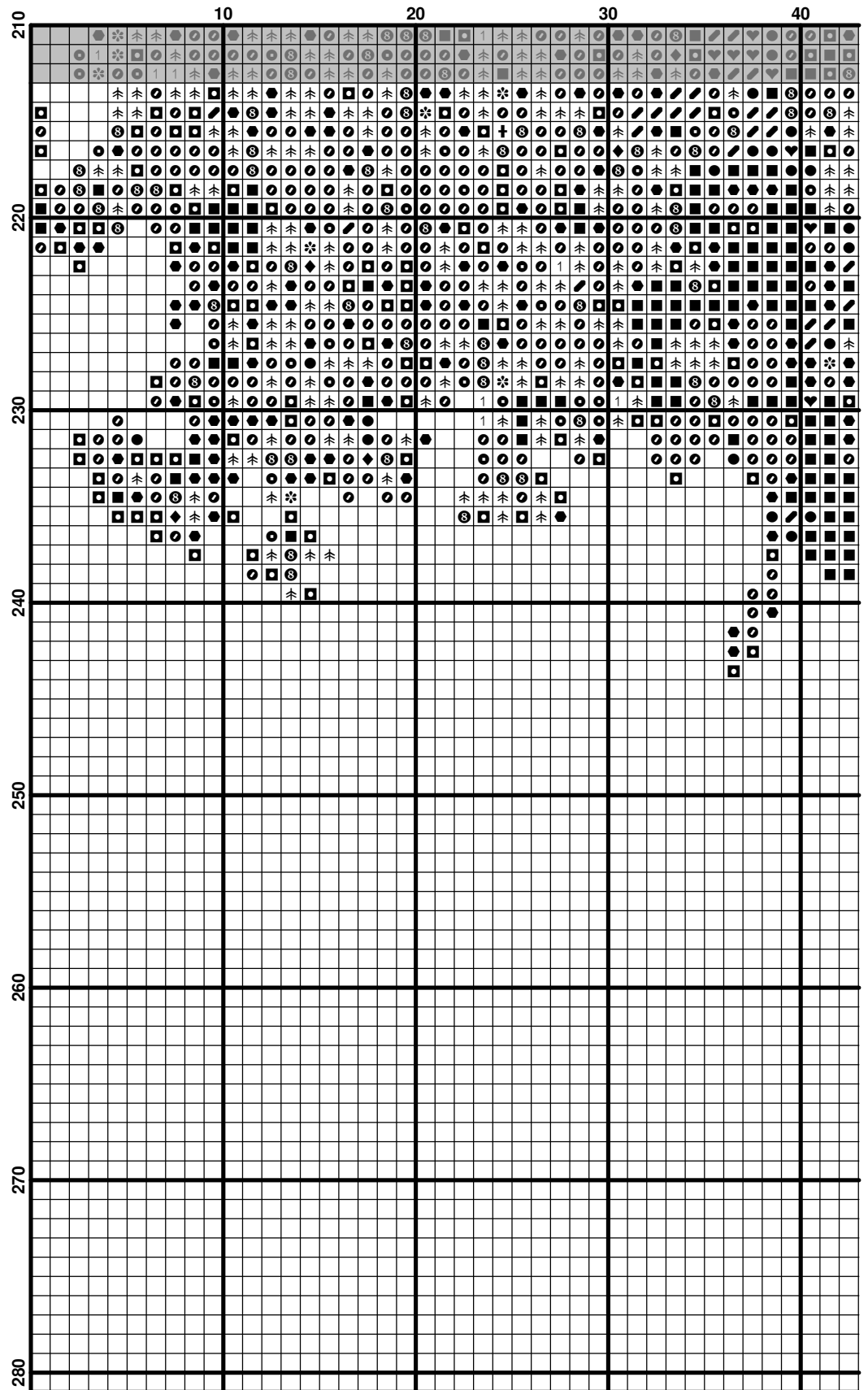


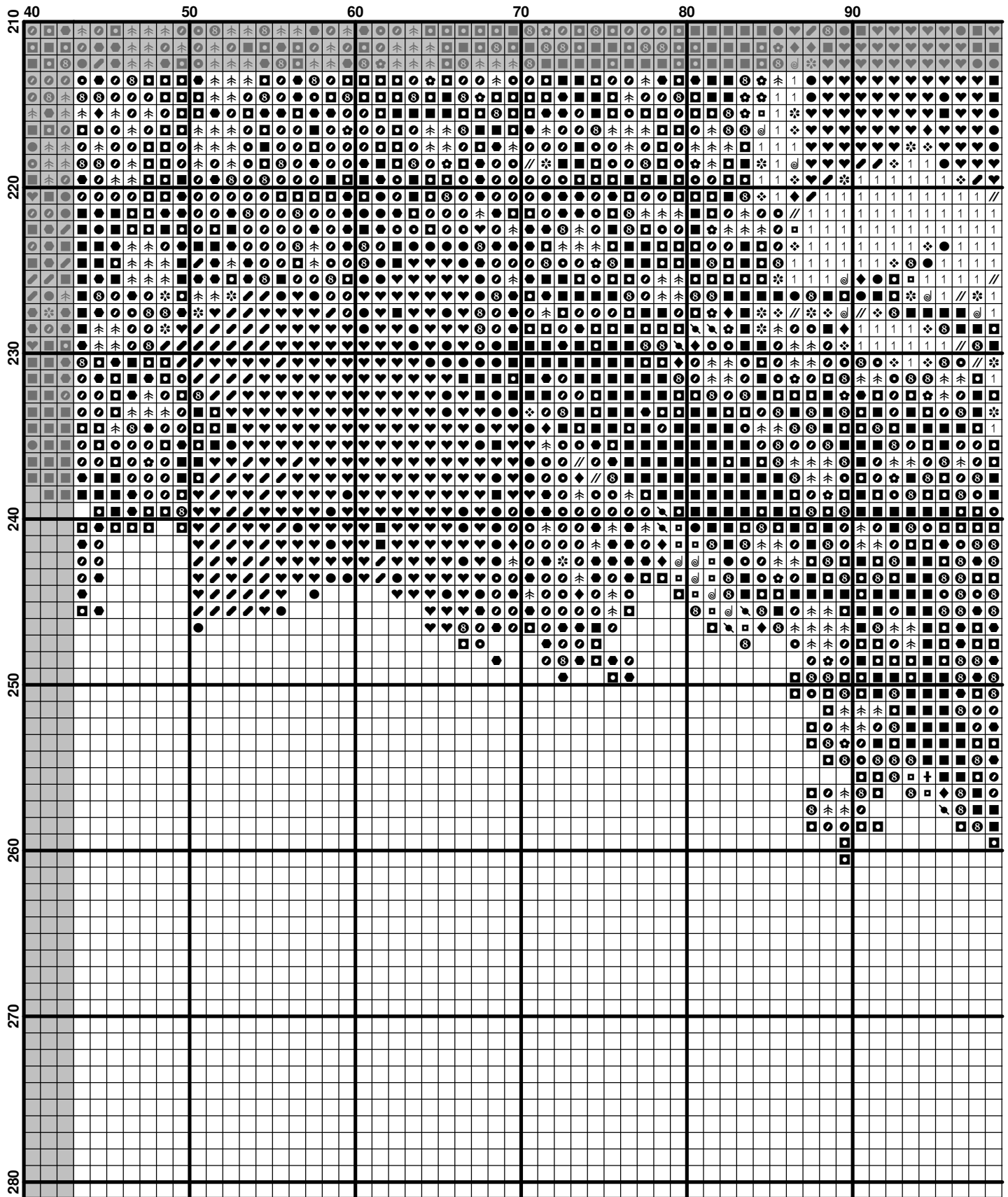
	40	50	60	70	80	90
140	⬛	⬛	⬛	⬛	⬛	⬛
141	⬛	⬛	⬛	⬛	⬛	⬛
142	⬛	⬛	⬛	⬛	⬛	⬛
143	⬛	⬛	⬛	⬛	⬛	⬛
144	⬛	⬛	⬛	⬛	⬛	⬛
145	⬛	⬛	⬛	⬛	⬛	⬛
146	⬛	⬛	⬛	⬛	⬛	⬛
147	⬛	⬛	⬛	⬛	⬛	⬛
148	⬛	⬛	⬛	⬛	⬛	⬛
149	⬛	⬛	⬛	⬛	⬛	⬛
150	⬛	⬛	⬛	⬛	⬛	⬛
151	⬛	⬛	⬛	⬛	⬛	⬛
152	⬛	⬛	⬛	⬛	⬛	⬛
153	⬛	⬛	⬛	⬛	⬛	⬛
154	⬛	⬛	⬛	⬛	⬛	⬛
155	⬛	⬛	⬛	⬛	⬛	⬛
156	⬛	⬛	⬛	⬛	⬛	⬛
157	⬛	⬛	⬛	⬛	⬛	⬛
158	⬛	⬛	⬛	⬛	⬛	⬛
159	⬛	⬛	⬛	⬛	⬛	⬛
160	⬛	⬛	⬛	⬛	⬛	⬛
161	⬛	⬛	⬛	⬛	⬛	⬛
162	⬛	⬛	⬛	⬛	⬛	⬛
163	⬛	⬛	⬛	⬛	⬛	⬛
164	⬛	⬛	⬛	⬛	⬛	⬛
165	⬛	⬛	⬛	⬛	⬛	⬛
166	⬛	⬛	⬛	⬛	⬛	⬛
167	⬛	⬛	⬛	⬛	⬛	⬛
168	⬛	⬛	⬛	⬛	⬛	⬛
169	⬛	⬛	⬛	⬛	⬛	⬛
170	⬛	⬛	⬛	⬛	⬛	⬛
171	⬛	⬛	⬛	⬛	⬛	⬛
172	⬛	⬛	⬛	⬛	⬛	⬛
173	⬛	⬛	⬛	⬛	⬛	⬛
174	⬛	⬛	⬛	⬛	⬛	⬛
175	⬛	⬛	⬛	⬛	⬛	⬛
176	⬛	⬛	⬛	⬛	⬛	⬛
177	⬛	⬛	⬛	⬛	⬛	⬛
178	⬛	⬛	⬛	⬛	⬛	⬛
179	⬛	⬛	⬛	⬛	⬛	⬛
180	⬛	⬛	⬛	⬛	⬛	⬛
181	⬛	⬛	⬛	⬛	⬛	⬛
182	⬛	⬛	⬛	⬛	⬛	⬛
183	⬛	⬛	⬛	⬛	⬛	⬛
184	⬛	⬛	⬛	⬛	⬛	⬛
185	⬛	⬛	⬛	⬛	⬛	⬛
186	⬛	⬛	⬛	⬛	⬛	⬛
187	⬛	⬛	⬛	⬛	⬛	⬛
188	⬛	⬛	⬛	⬛	⬛	⬛
189	⬛	⬛	⬛	⬛	⬛	⬛
190	⬛	⬛	⬛	⬛	⬛	⬛
191	⬛	⬛	⬛	⬛	⬛	⬛
192	⬛	⬛	⬛	⬛	⬛	⬛
193	⬛	⬛	⬛	⬛	⬛	⬛
194	⬛	⬛	⬛	⬛	⬛	⬛
195	⬛	⬛	⬛	⬛	⬛	⬛
196	⬛	⬛	⬛	⬛	⬛	⬛
197	⬛	⬛	⬛	⬛	⬛	⬛
198	⬛	⬛	⬛	⬛	⬛	⬛
199	⬛	⬛	⬛	⬛	⬛	⬛
200	⬛	⬛	⬛	⬛	⬛	⬛
201	⬛	⬛	⬛	⬛	⬛	⬛
202	⬛	⬛	⬛	⬛	⬛	⬛
203	⬛	⬛	⬛	⬛	⬛	⬛
204	⬛	⬛	⬛	⬛	⬛	⬛
205	⬛	⬛	⬛	⬛	⬛	⬛
206	⬛	⬛	⬛	⬛	⬛	⬛
207	⬛	⬛	⬛	⬛	⬛	⬛
208	⬛	⬛	⬛	⬛	⬛	⬛
209	⬛	⬛	⬛	⬛	⬛	⬛
210	⬛	⬛	⬛	⬛	⬛	⬛

	100	110	120	130	140	150
140	1	1	1	1	1	1
141	1	1	1	1	1	1
142	1	1	1	1	1	1
143	1	1	1	1	1	1
144	1	1	1	1	1	1
145	1	1	1	1	1	1
146	1	1	1	1	1	1
147	1	1	1	1	1	1
148	1	1	1	1	1	1
149	1	1	1	1	1	1
150	1	1	1	1	1	1
151	1	1	1	1	1	1
152	1	1	1	1	1	1
153	1	1	1	1	1	1
154	1	1	1	1	1	1
155	1	1	1	1	1	1
156	1	1	1	1	1	1
157	1	1	1	1	1	1
158	1	1	1	1	1	1
159	1	1	1	1	1	1
160	1	1	1	1	1	1
161	1	1	1	1	1	1
162	1	1	1	1	1	1
163	1	1	1	1	1	1
164	1	1	1	1	1	1
165	1	1	1	1	1	1
166	1	1	1	1	1	1
167	1	1	1	1	1	1
168	1	1	1	1	1	1
169	1	1	1	1	1	1
170	1	1	1	1	1	1
171	1	1	1	1	1	1
172	1	1	1	1	1	1
173	1	1	1	1	1	1
174	1	1	1	1	1	1
175	1	1	1	1	1	1
176	1	1	1	1	1	1
177	1	1	1	1	1	1
178	1	1	1	1	1	1
179	1	1	1	1	1	1
180	1	1	1	1	1	1
181	1	1	1	1	1	1
182	1	1	1	1	1	1
183	1	1	1	1	1	1
184	1	1	1	1	1	1
185	1	1	1	1	1	1
186	1	1	1	1	1	1
187	1	1	1	1	1	1
188	1	1	1	1	1	1
189	1	1	1	1	1	1
190	1	1	1	1	1	1
191	1	1	1	1	1	1
192	1	1	1	1	1	1
193	1	1	1	1	1	1
194	1	1	1	1	1	1
195	1	1	1	1	1	1
196	1	1	1	1	1	1
197	1	1	1	1	1	1
198	1	1	1	1	1	1
199	1	1	1	1	1	1
200	1	1	1	1	1	1
201	1	1	1	1	1	1
202	1	1	1	1	1	1
203	1	1	1	1	1	1
204	1	1	1	1	1	1
205	1	1	1	1	1	1
206	1	1	1	1	1	1
207	1	1	1	1	1	1
208	1	1	1	1	1	1
209	1	1	1	1	1	1
210	1	1	1	1	1	1

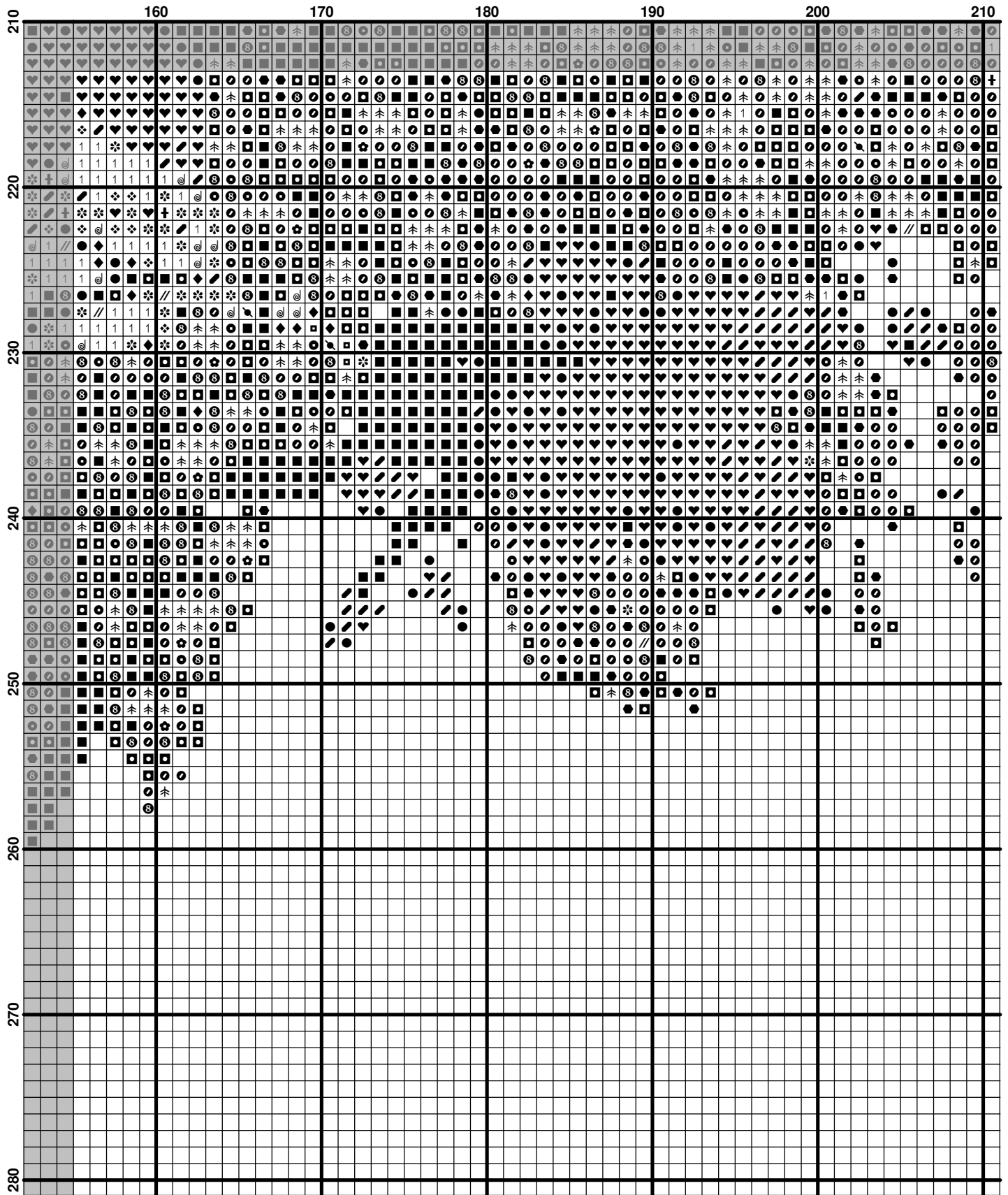


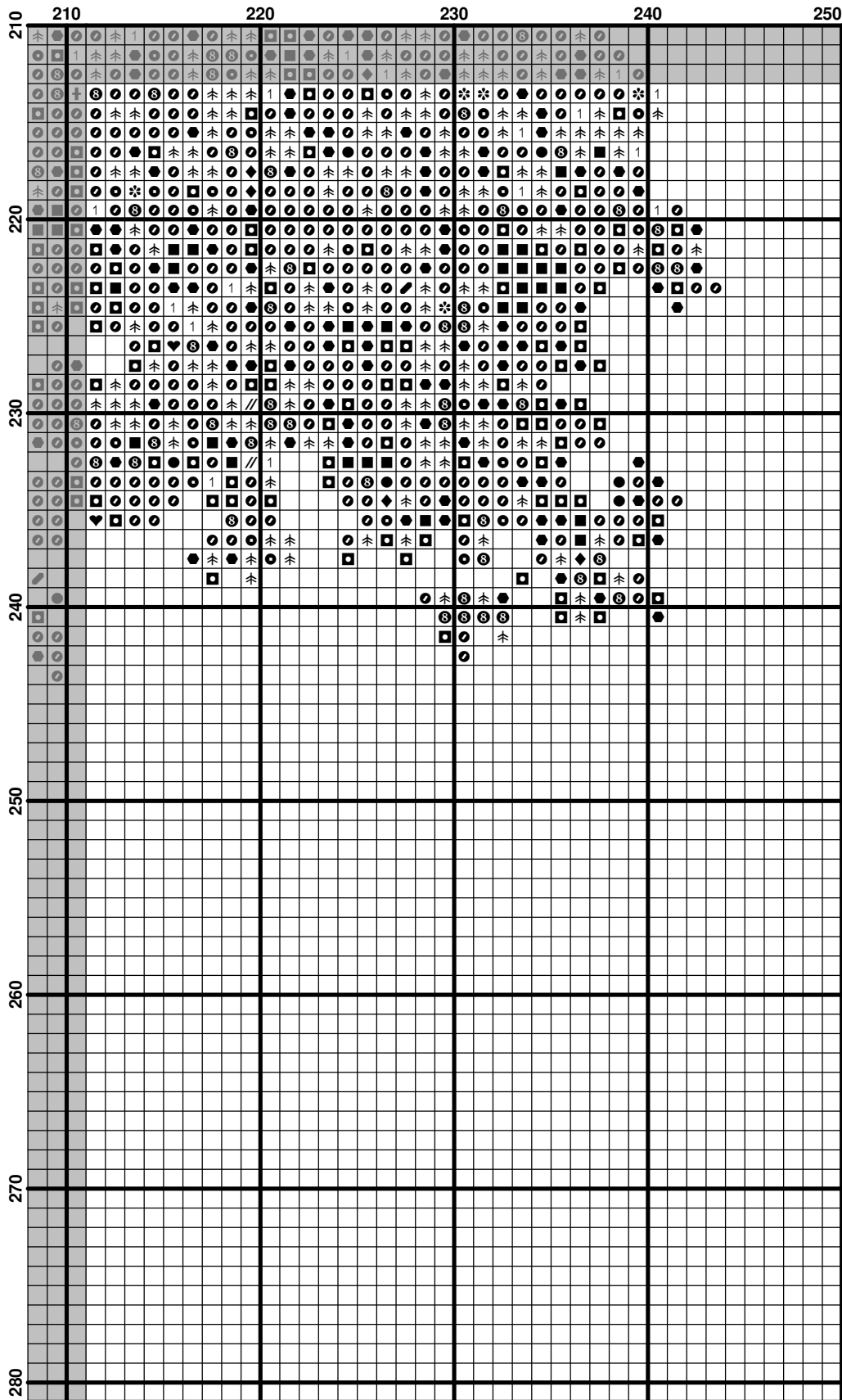






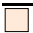



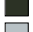











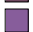
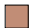








**Pattern Name:** Persephone  
**Designed By:** Jaenne Meiers-Bonner  
**Company:** Jaenne.com  
**Copyright:** (c) Jaenne.com  
**Fabric:** Aida 32, Lavender Mist  
 250w X 280h Stitches  
**Size(s):** 32 Count, 7-3/4w X 8-3/4h in  
 22 Count, 11-1/4w X 12-5/8h in  
 18 Count, 13-7/8w X 15-1/2h in  
 16 Count, 15-5/8w X 17-1/2h in

**Floss Used for Full Stitches:**

Symbol	Strands	Type	Number	Color
	1	2	DMC 98	Ecru
	1	2	DMC 152	Shell Pink-MD LT
	1	2	DMC 154	Grape-VY DK
	1	2	DMC 158	Cornflower Blue-MD VY DK
	1	2	DMC 310	Black
	1	2	DMC 415	Pearl Gray
	1	2	DMC 552	Violet-MD
	1	2	DMC 554	Violet-LT
	1	2	DMC 647	Beaver Gray-MD
	1	2	DMC 648	Beaver Gray-LT
	1	2	DMC 905	Parrot Green-DK
	1	2	DMC 934	Black Avocado Green
	1	2	DMC 950	Desert Sand-LT
	1	2	DMC 987	Forest Green-DK
	1	2	DMC 3726	Antique Mauve-DK
	1	2	DMC 3804	Cyclamen Pink-DK
	1	2	DMC 3828	Hazelnut Brown
	1	2	DMC 3834	Grape-DK
	1	2	DMC 3837	Lavender-UL DK
	1	2	DMC 3859	Rosewood-LT

**Usage Summary****Strands Per Skein:** 6**Skein Length:** 313.0 in

Type	Number	Full	Half	Quarter	Petite	Back(in)	Str(in)	Spec(in)	French	Bead	Skein Est.
DMC 98	12979	0	0	0	0.0	0.0	0.0	0	0	7.000	
DMC 152	171	0	0	0	0.0	0.0	0.0	0	0	1.000	
DMC 154	3314	0	0	0	0.0	0.0	0.0	0	0	2.000	
DMC 158	2872	0	0	0	0.0	0.0	0.0	0	0	2.000	
DMC 310	4587	0	0	0	0.0	0.0	0.0	0	0	3.000	
DMC 415	137	0	0	0	0.0	0.0	0.0	0	0	1.000	
DMC 552	1890	0	0	0	0.0	0.0	0.0	0	0	2.000	
DMC 554	2937	0	0	0	0.0	0.0	0.0	0	0	2.000	
DMC 647	617	0	0	0	0.0	0.0	0.0	0	0	1.000	
DMC 648	227	0	0	0	0.0	0.0	0.0	0	0	1.000	
DMC 905	3359	0	0	0	0.0	0.0	0.0	0	0	2.000	
DMC 934	2561	0	0	0	0.0	0.0	0.0	0	0	2.000	
DMC 950	244	0	0	0	0.0	0.0	0.0	0	0	1.000	
DMC 987	1331	0	0	0	0.0	0.0	0.0	0	0	1.000	
DMC 3726	418	0	0	0	0.0	0.0	0.0	0	0	1.000	
DMC 3804	2044	0	0	0	0.0	0.0	0.0	0	0	2.000	
DMC 3828	335	0	0	0	0.0	0.0	0.0	0	0	1.000	
DMC 3834	3910	0	0	0	0.0	0.0	0.0	0	0	3.000	
DMC 3837	6353	0	0	0	0.0	0.0	0.0	0	0	4.000	
DMC 3859	163	0	0	0	0.0	0.0	0.0	0	0	1.000	