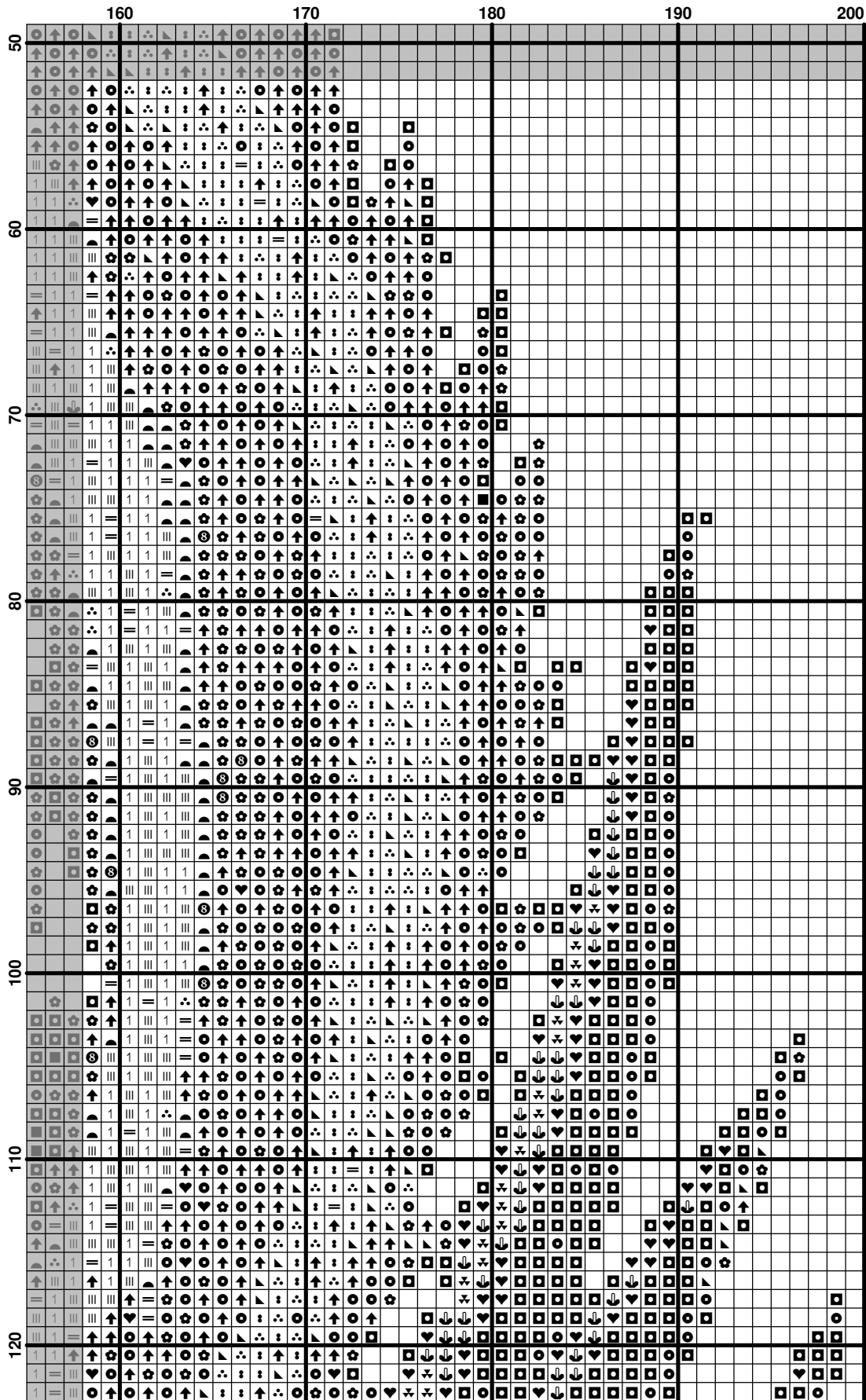
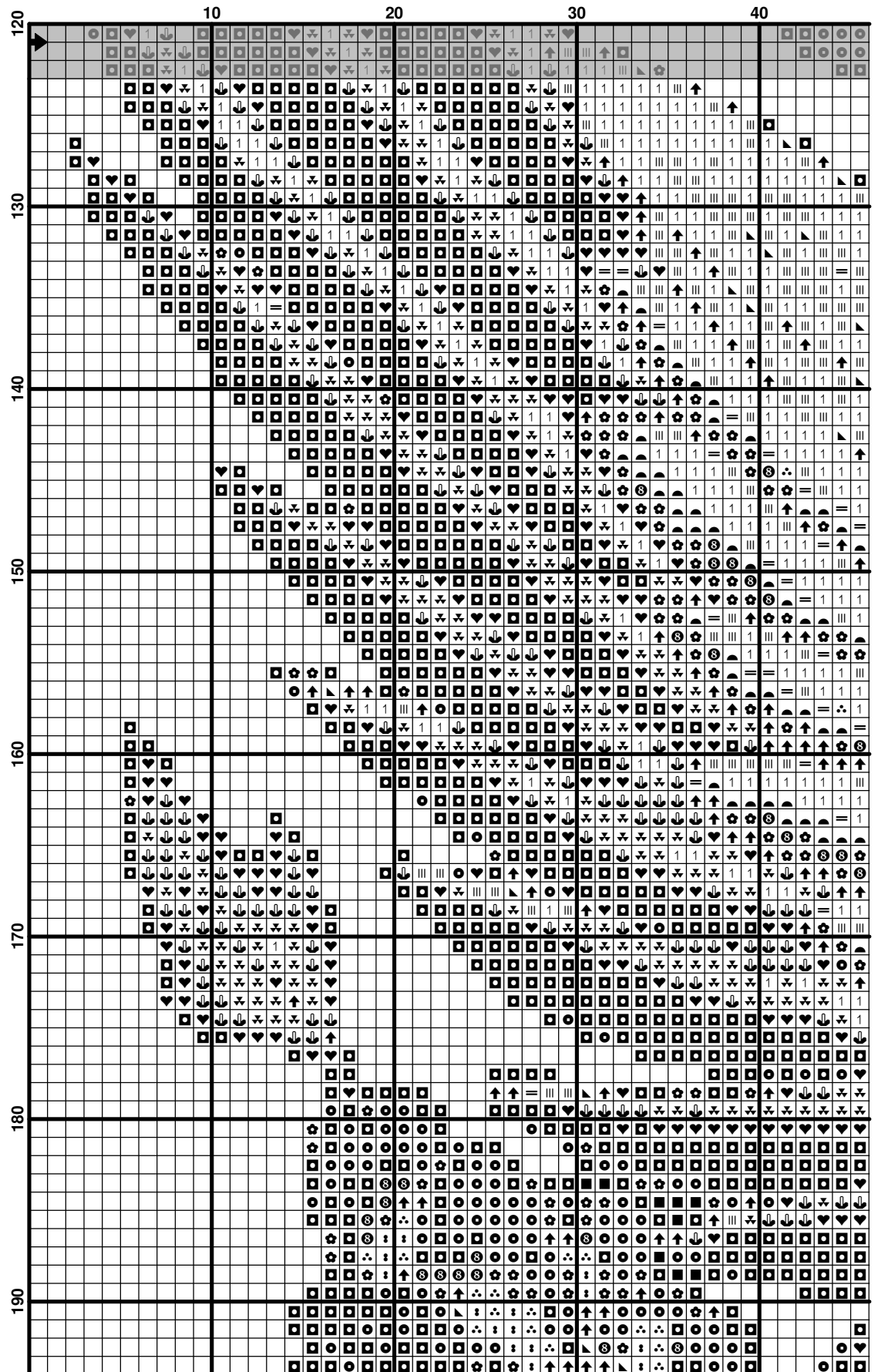
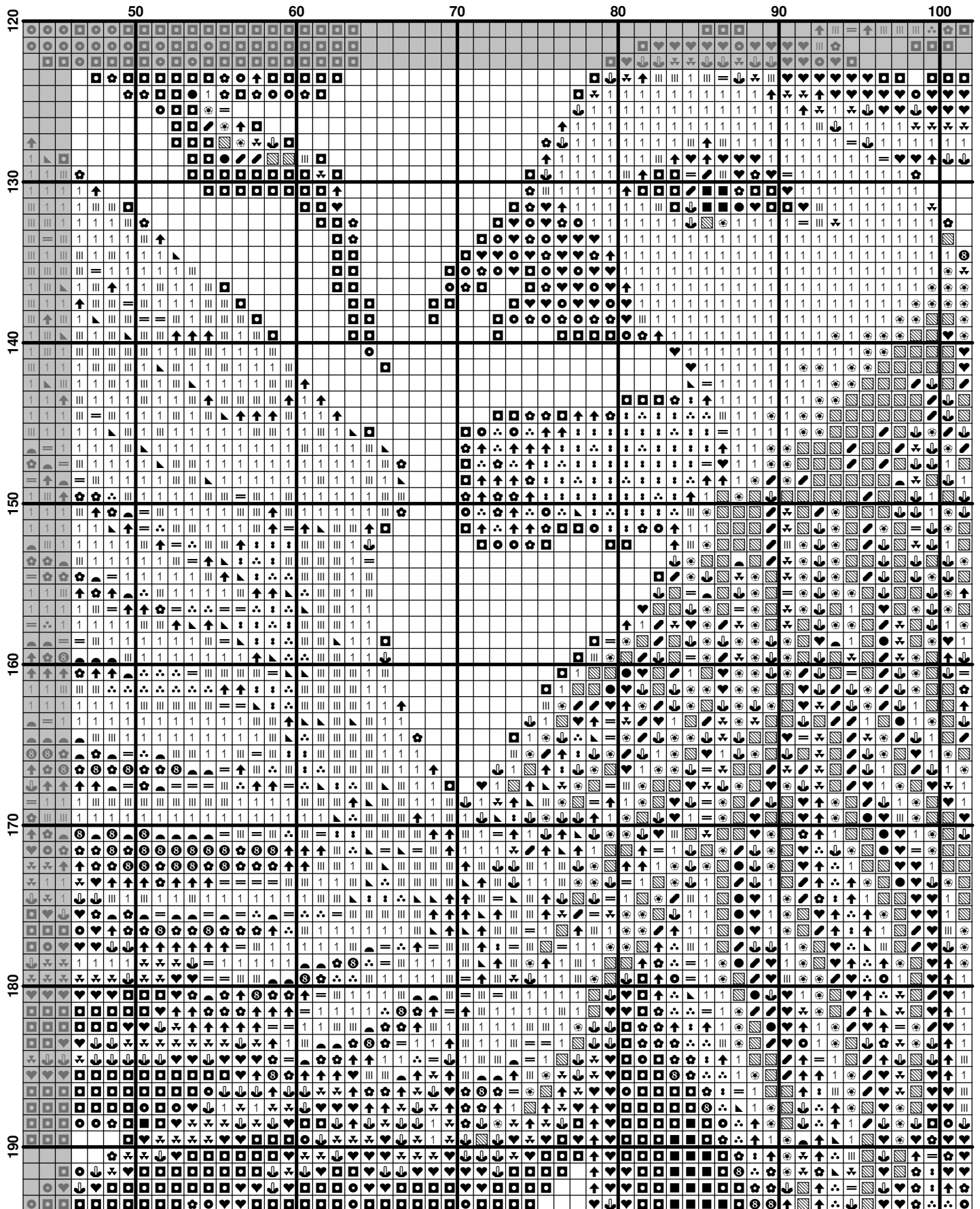
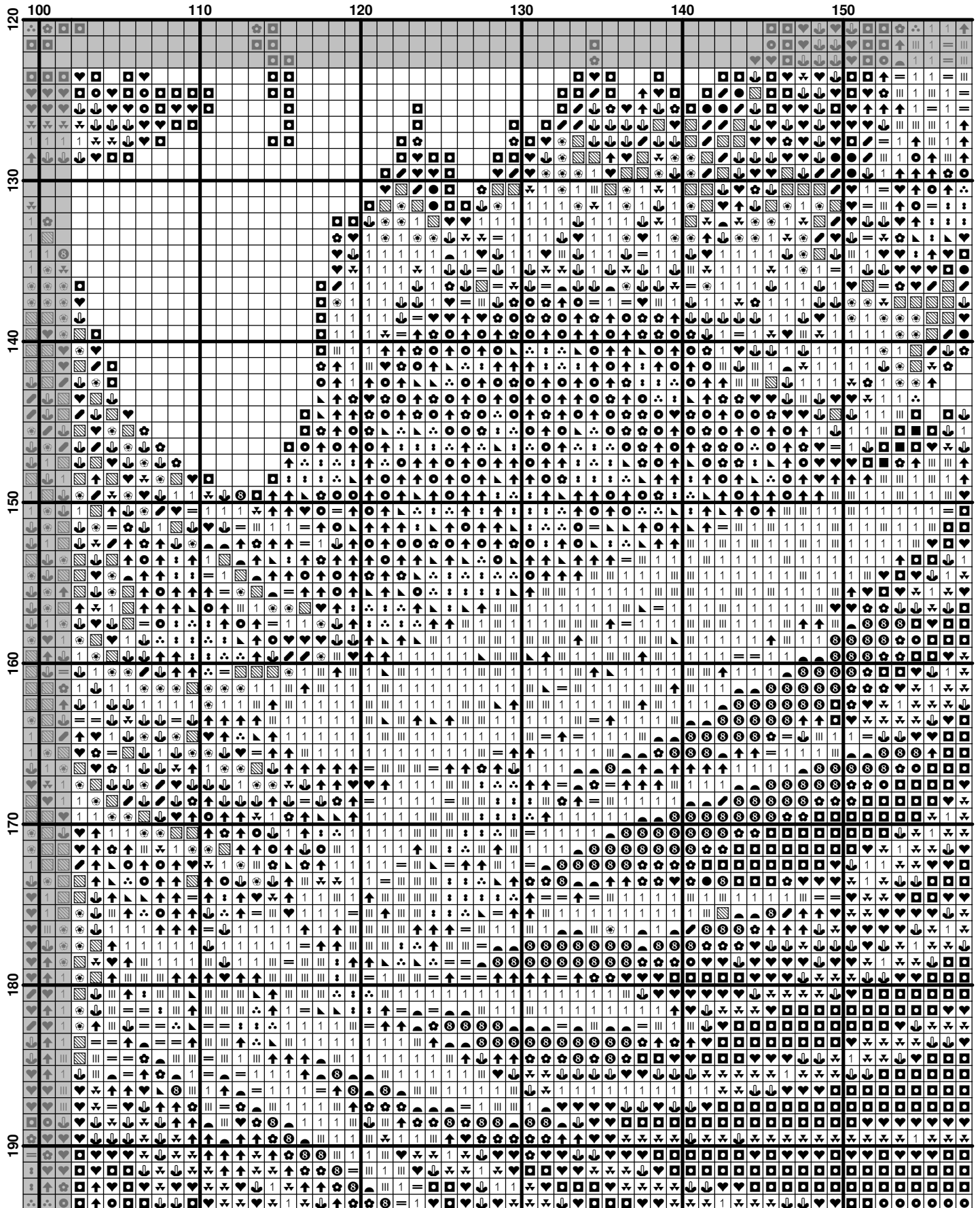


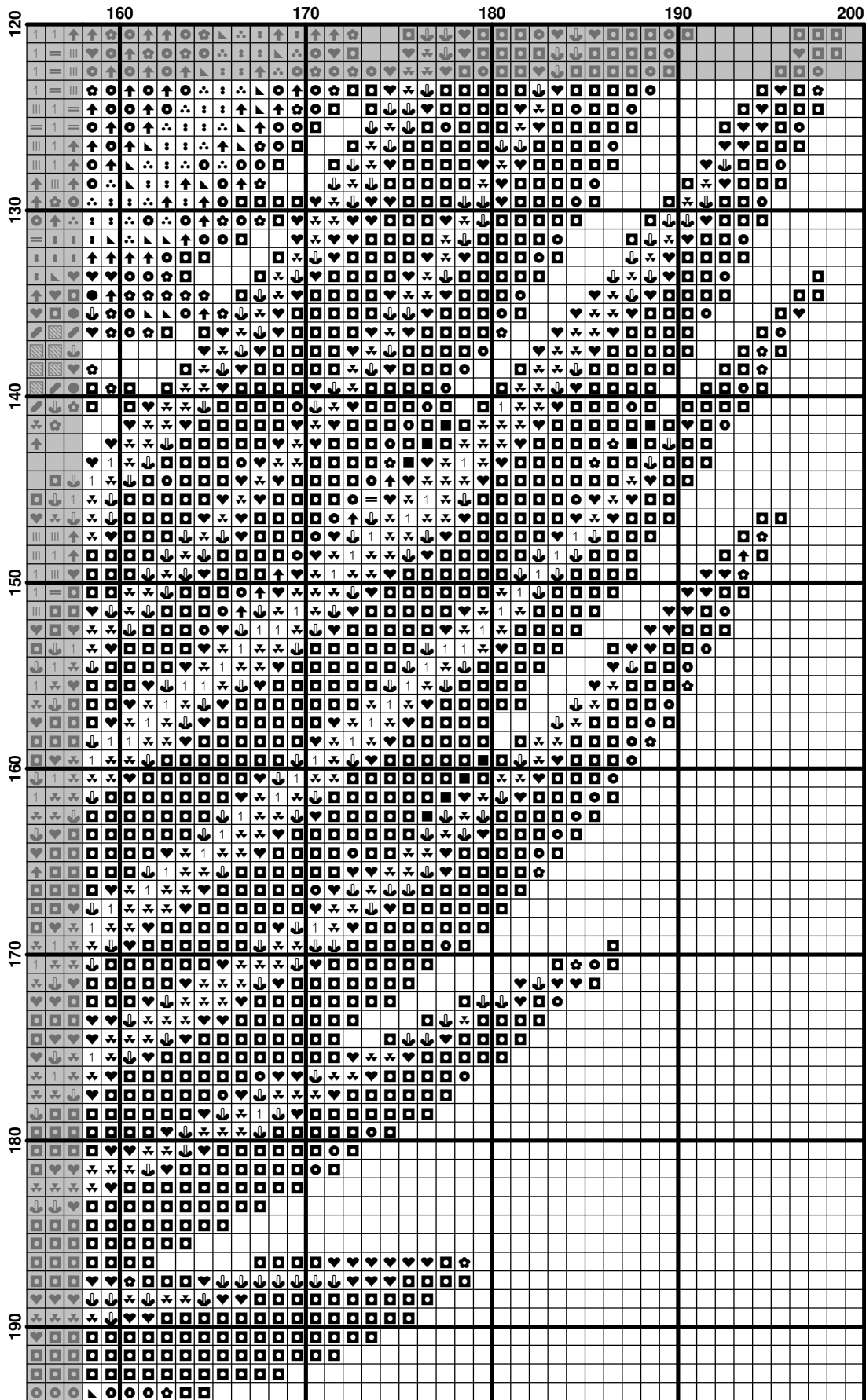
The image displays a musical score for a 120-measure piece, organized into five systems of 24 measures each. The systems are labeled at the top as 100, 110, 120, 130, 140, and 150. The vertical axis on the left is labeled with measure numbers 50, 60, 70, 80, 90, 100, 110, and 120. The score is presented in a grid format, with each cell containing a musical symbol. The symbols include various note values (quarter, eighth, sixteenth notes), rests, and dynamic markings such as accents and slurs. The notation is dense and covers the entire grid area.

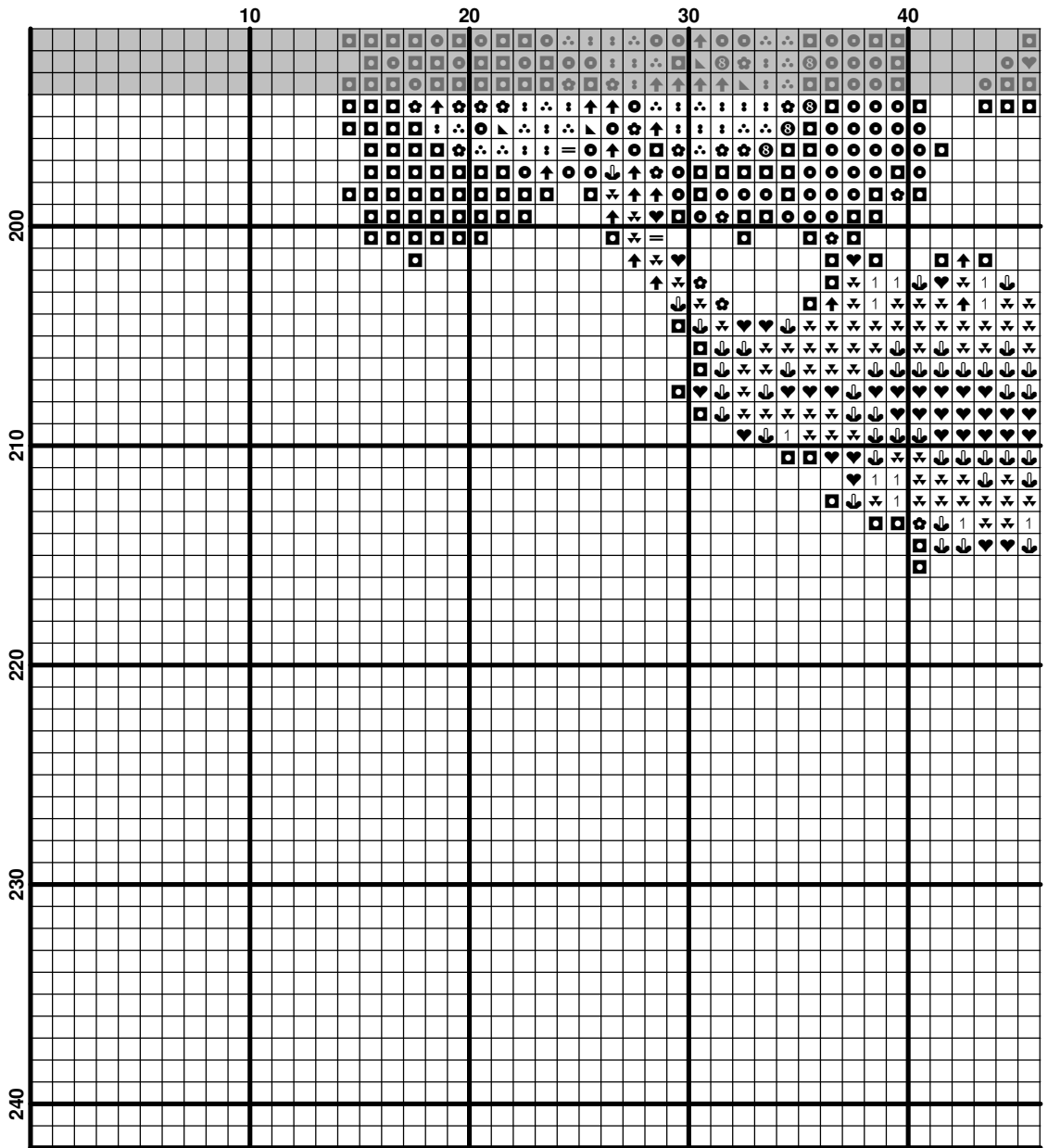


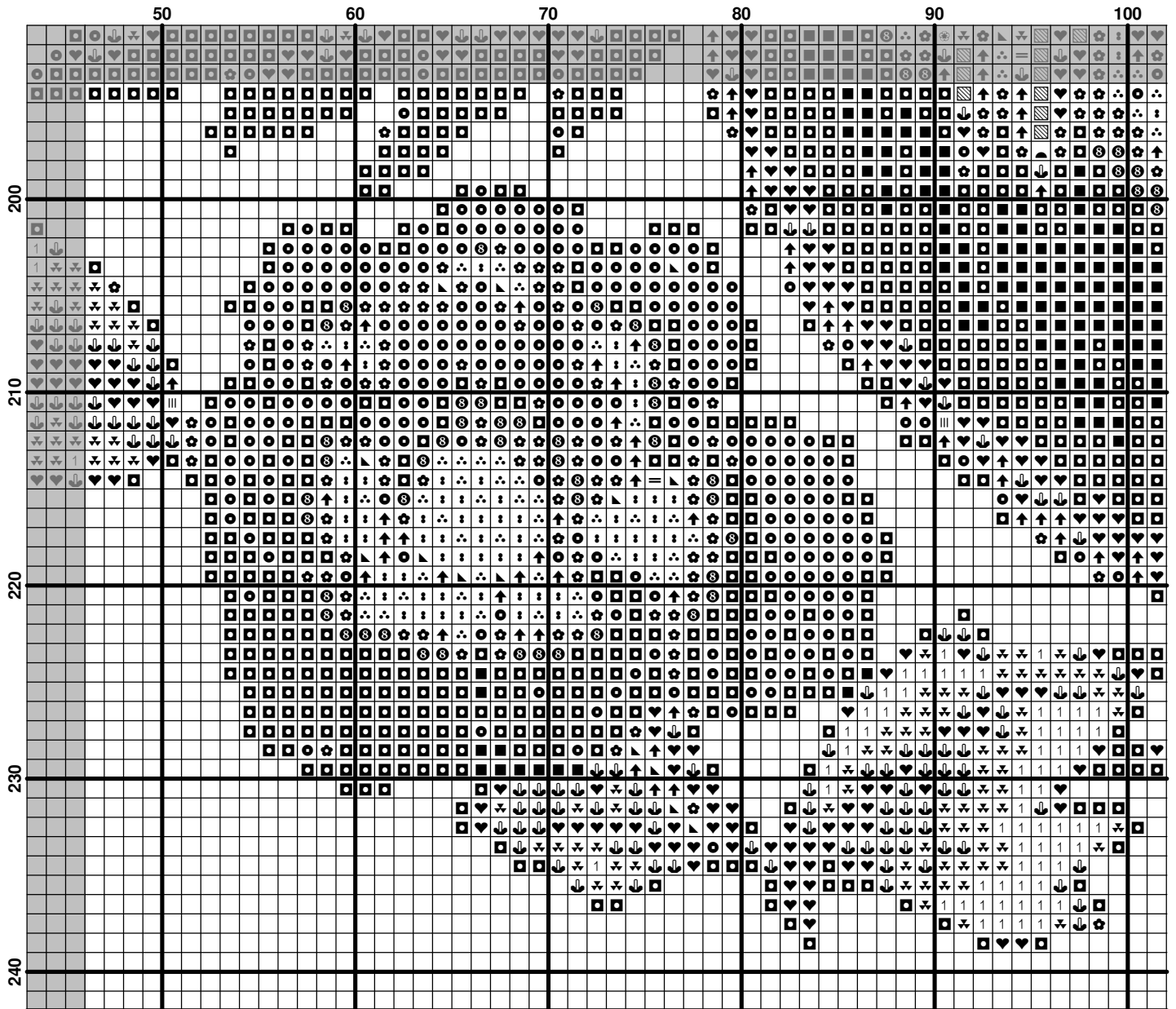


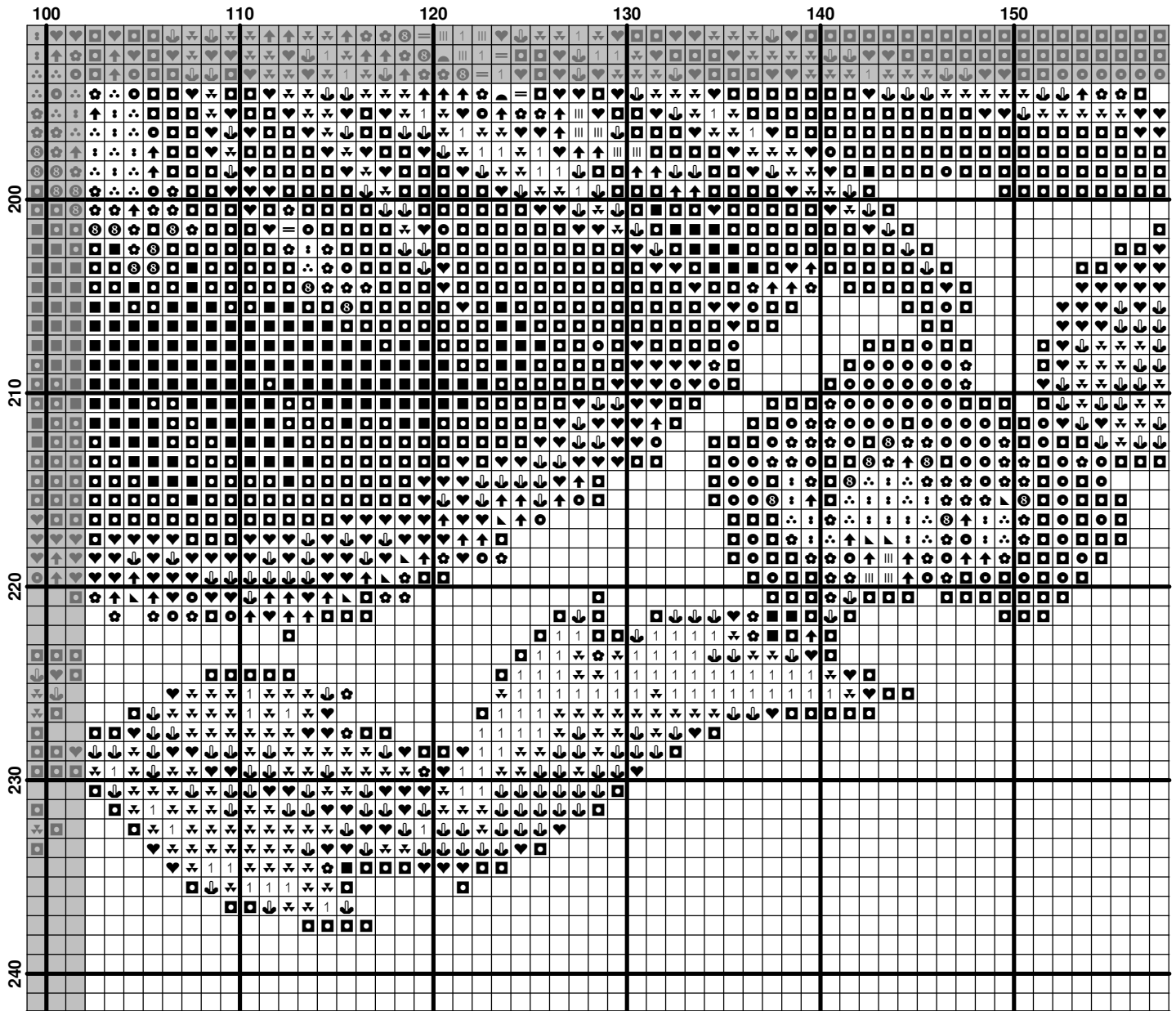



















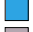





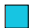








**Pattern Name:** Blue Grace  
**Designed By:** Jaenne Meiers-Bonner  
**Company:** Jaenne.com  
**Copyright:** (c) Jaenne.com  
**Fabric:** Aida 32, Black  
 199w X 237h Stitches  
**Size(s):** 32 Count, 6-1/8w X 7-3/8h in  
 22 Count, 9w X 10-3/4h in  
 18 Count, 11w X 13-1/8h in  
 16 Count, 12-3/8w X 14-3/4h in

**Floss Used for Full Stitches:**

Symbol	Strands	Type	Number	Color
	2	DMC	208	Lavender-VY DK
	2	DMC	223	Shell Pink-LT
	2	DMC	310	Black
	2	DMC	413	Pewter Gray-DK
	2	DMC	517	Wedgewood-DK
	2	DMC	550	Violet-VY DK
	2	DMC	597	Turquoise
	2	DMC	792	Cornflower Blue-DK
	2	DMC	797	Royal Blue
	2	DMC	820	Royal Blue-VY DK
	2	DMC	958	Sea Green-DK
	2	DMC	995	Electric Blue-DK
	2	DMC	996	Electric Blue-MD
	2	DMC	3042	Antique Violet-LT
	2	DMC	3726	Antique Mauve-DK
	2	DMC	3808	Turquoise-UL VY DK
	2	DMC	3810	Turquoise-DK
	2	DMC	3815	Celadon Green-DK
	2	DMC	3842	Wedgewood-DK
	2	DMC	3846	Bright Turquoise-LT

**Usage Summary**

**Strands Per Skein:** 6

**Skein Length:** 313.0 in

Type	Number	Full	Half	Quarter	Petite	Back(in)	Str(in)	Spec(in)	French	Bead	Skein Est.
DMC	208	1580	0	0	0	0.0	0.0	0.0	0	0	1.000
DMC	223	398	0	0	0	0.0	0.0	0.0	0	0	1.000
DMC	310	478	0	0	0	0.0	0.0	0.0	0	0	1.000
DMC	413	172	0	0	0	0.0	0.0	0.0	0	0	1.000
DMC	517	2282	0	0	0	0.0	0.0	0.0	0	0	2.000
DMC	550	214	0	0	0	0.0	0.0	0.0	0	0	1.000
DMC	597	1124	0	0	0	0.0	0.0	0.0	0	0	1.000
DMC	792	1565	0	0	0	0.0	0.0	0.0	0	0	1.000
DMC	797	1955	0	0	0	0.0	0.0	0.0	0	0	2.000
DMC	820	7124	0	0	0	0.0	0.0	0.0	0	0	4.000
DMC	958	730	0	0	0	0.0	0.0	0.0	0	0	1.000
DMC	995	2124	0	0	0	0.0	0.0	0.0	0	0	2.000
DMC	996	585	0	0	0	0.0	0.0	0.0	0	0	1.000
DMC	3042	2835	0	0	0	0.0	0.0	0.0	0	0	2.000
DMC	3726	494	0	0	0	0.0	0.0	0.0	0	0	1.000
DMC	3808	565	0	0	0	0.0	0.0	0.0	0	0	1.000
DMC	3810	424	0	0	0	0.0	0.0	0.0	0	0	1.000
DMC	3815	613	0	0	0	0.0	0.0	0.0	0	0	1.000
DMC	3842	1789	0	0	0	0.0	0.0	0.0	0	0	1.000
DMC	3846	815	0	0	0	0.0	0.0	0.0	0	0	1.000